



Quick Installation Guide

Dual-band 4G Router CP-XR-DN211-S

Package contents

Please check for the following items in the packing box:

- 4g Router × 1
- Power adapter × 1
- Quick Installation Guide × 1
- Ethernet cable × 1

For product or function details, please go through the user guide.

Appearance








The picture is only for reference, please make the object as the standard.

Interfaces Description

Interface	Function
Power	USB DC power input interface, connect to 12V/1A power adapter
Reset	Reset button, press and hold for more than 5 seconds in the power-on state, the router will restore factory settings
W/LAN	Rj45 network port, can be used as LAN port or WAN port
LAN	Rj45 network port, can be used as a LAN port
Sim card slot	SIM card slot, only supports standard SIM card

LED Lights indicators

Indicator	Meaning	Status	Description
	Power	Always on	The light is on after connected to external power.
	System	Always on	The light is on after the device is turned on.
	Wi-Fi	Always on	Wi-Fi function is normally enabled, no data connection.
		Flashing	Wi-Fi function is normally enabled, there is data connection.
	Networking indicator	Always on	There is network and data transmission.
		off	No network or there is network but no data transmission.
		Always on	After inserting the SIM card, the device finds the network and has a data connection.
	4G indicator	Flashing	After inserting the SIM card, the device finds the network but there is no data connection.
		off	SIM card not inserted, or the network is not found after inserting the SIM card.

Working Environments

To ensure proper functioning of the router, the operating environment is recommended as follows:

- a) Keep away from heat, maintain ventilation
- b) Lay equipment's on flat surface
- c) Lay equipment's in dry environment without dust
- d) Dismantle power supply and all wirings in thunderstorm weather in case of lightning stroke

Note: please supply rated power for equipment's. If unmatched power is supplied, router may get damaged.

Installation Steps

Router installation steps

This router has a built-in 3G/4G modem. Before using the 4G router, you need to purchase a 4G SIM card from a local operator.

Insert the 4G SIM card into the SIM card slot of the device.

Please pay attention to the insertion instructions near the SIM card slot. This router only supports standard SIM card. If you need to replace the SIM card, please turn off the device power first to prevent damage to the SIM card.

Power on

Please use the original factory standard power adapter to power the 4G router, plug in the power supply and wait a while, because the device will take some time to start up.

After startup, the power indicator and WIFI indicator are always on. After successfully registering to the 4G network, the networking indicator will always be on. Now you can use computers, mobile phones and other terminals to connect to this machine through WIFI (refer to the body label for the WIFI SSID) or network cable and use 4G data to surf the Internet.

Router Configuration

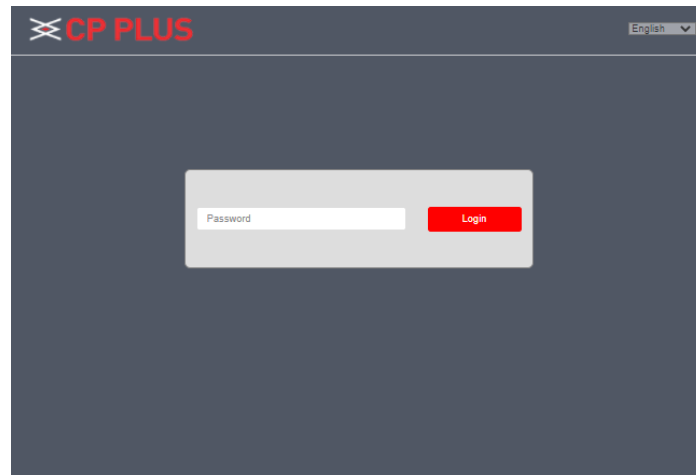
If you need to manage and configure this router, you can connect to the 4G router wirelessly or wiredly. For the default gateway address, please refer to the label on the router.

These network parameters can be modified according to the actual situation, and the default values will be explained in the text.

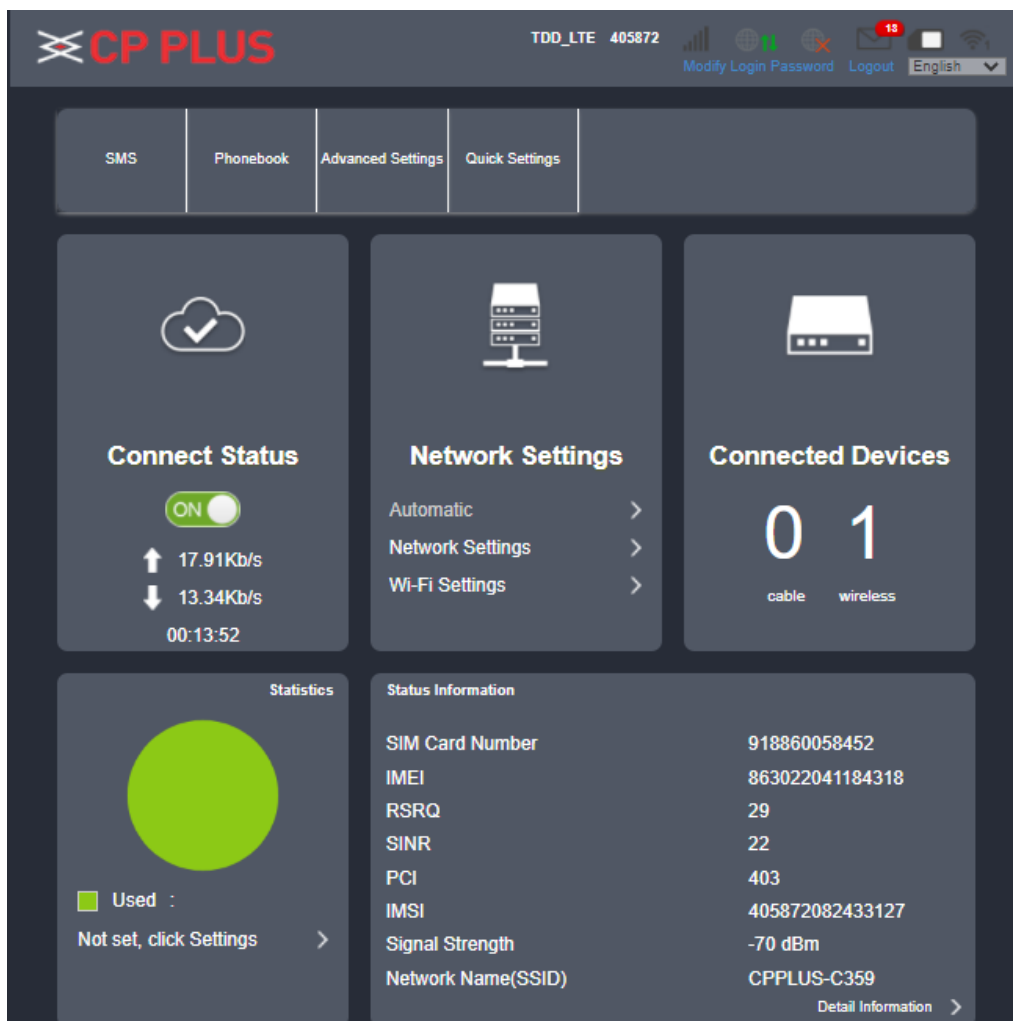
Log in to the router configuration page

1. Open the browser of your computer or smartphone/tablet, enter the IP address on the router body sticker in the address bar, and then press Enter to enter the background login interface.

2. In the login window that pops up, enter the password: admin; then click "Login"



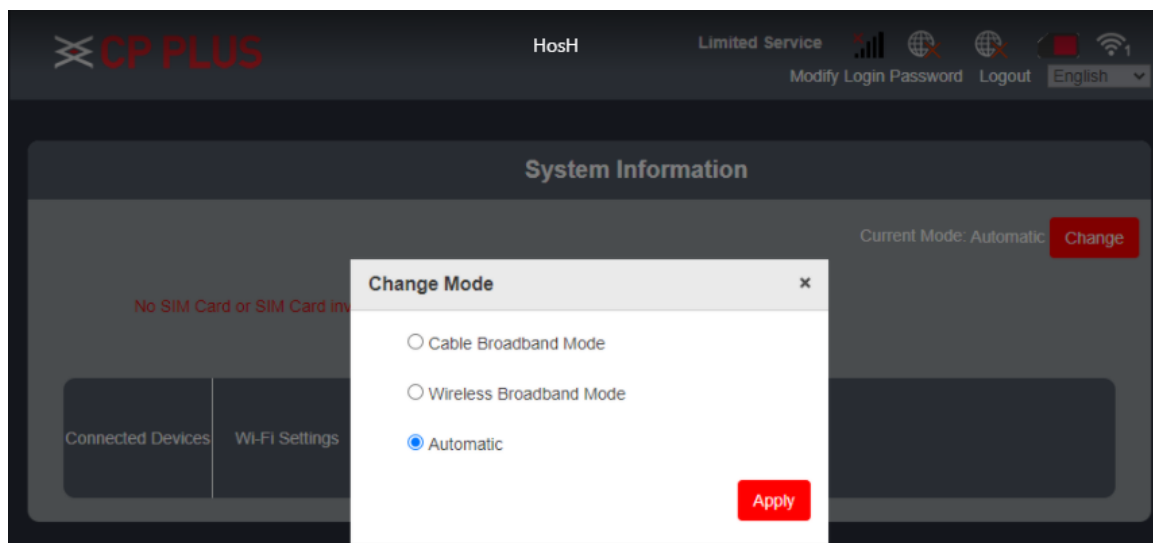
3. After entering the correct password, you can enter the router WEB configuration interface.



Prompt: password of initial administrator is admin; user can change administrator's password after entering configuration page.

Working mode settings

Router provides three modes of operation: Cable broadband mode, Wireless broadband mode, Automatic mode. Users can click "network connection" to turn off network before setting.



Cable broadband mode

Like home routers, WAN port connect to broadband network, access the internet via the WAN.

Network parameter setting

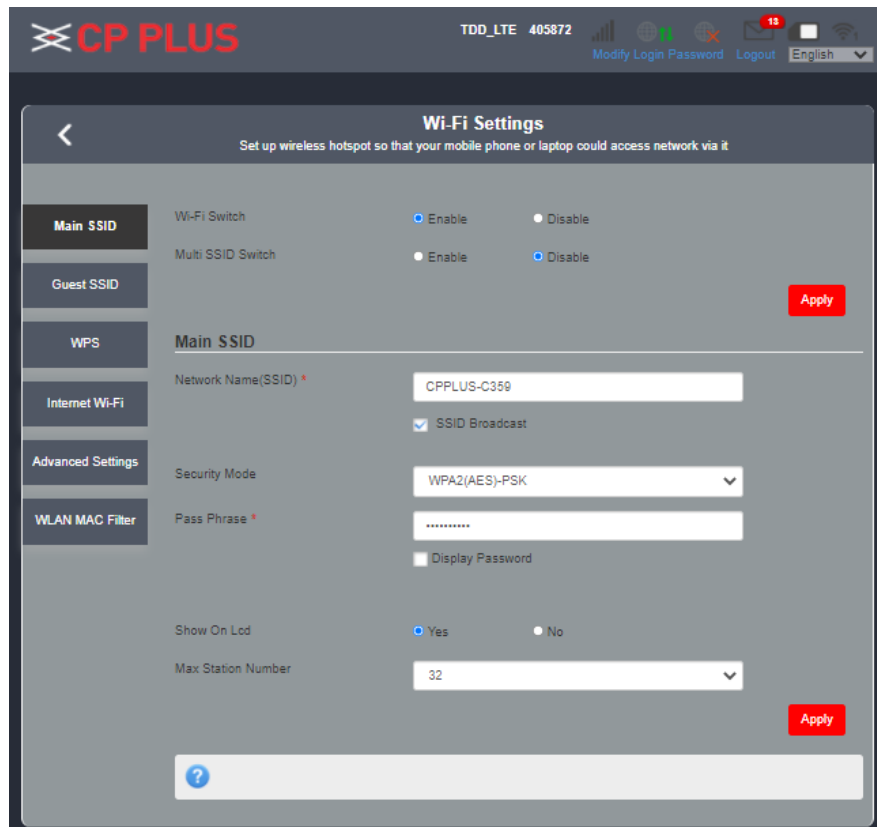
Inserts the SIM card, access the internet via the 4G modem, and the RJ45 port are LAN mode.

Automatic mode

Default mode, if WAN port connect to broadband network, it is equivalent to Cable broadband mode; if Inserts the SIM card, it is equivalent to Wireless.

WIFI Setting

Click “wi-fi settings” icon on the homepage, there will be interface of Wi-Fi settings as below.



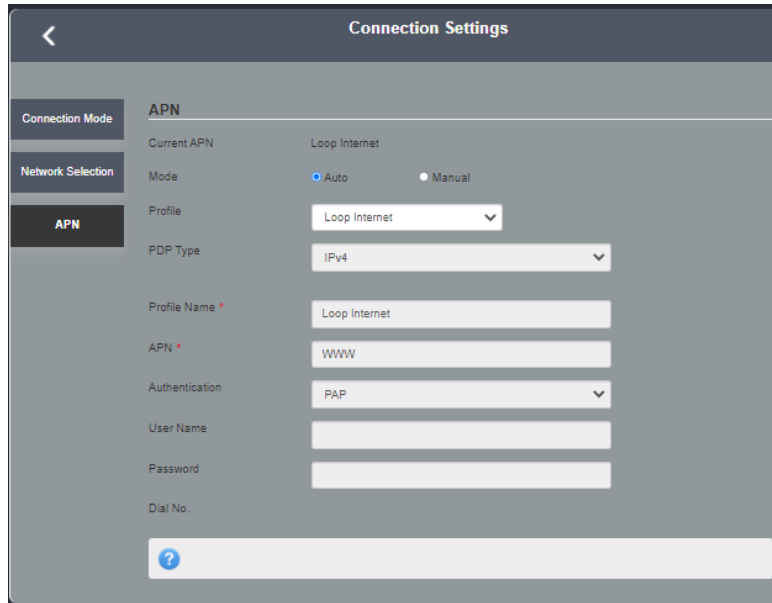
Setting 3G/4G Network

This router supports the function of automatically configuring 3G/4G dial-up parameters. Automatic configuration of network dial-up parameters for most operators in the world. Special APN customization requirements, please set the following steps:

Firstly: Confirm SIM card can work.

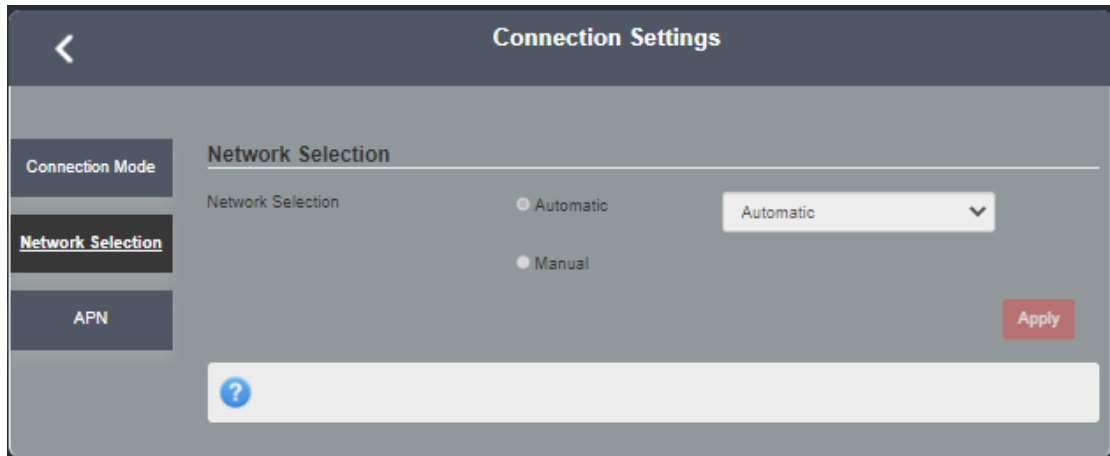
Secondly: Confirm that the 3G/4G dial setting normally router meets the local operator's setup requirements. The step as below:

(1). Please click on the "Set extranet connection" on the homepage and enter the APN settings. Then select the “Manual” mode, and enter the username, password, dialing number, APN parameter provided by 3G/4G ISP, click OK.



(2) Network Searching Method

When you select "manual" in the network searching mode, the network list will pop up, including all the networks searched. The user selects an available network from the list, and the device will register to the network selected by the user.



Technical Support

Toll Free: 8800952962 (India Region)

Website: www.cplusplusworld.com

E-mail: support@cplusplusworld.com