

# CP-UNC-VC41ZL4C-VMDS-V2

## 4MP WDR Network IR Vandal Dome Camera - 40 Mtr.

- 1/3" 4 Megapixel PS CMOS Image Sensor(0.84667cm)
- AI Instastream, Instastream, H.265 and H.264, triple-stream encoding
- Max. Output 4MP (2688 × 1520)@25/30fps.
- 2.7mm~13.5mm Motorized Lens
- WDR(120dB), Day/Night (ICR), SMD 4.0, 3D-DNR, ROI, AWB, AGC, BLC, HLC, EIS
- Supports Starlight Technology
- Supports Built in Mic
- Abnormality detection: Motion detection, privacy masking, scene changing, audio detection, no SD card, SD card full, SD card error
- IR Range of 40 Mtrs.
- Micro SD Card, IP67, IK10, PoE.
- Mobile Software: iCMOB, gCMOB
- CMS Software: KVMS Pro



### System Overview

Understanding the need of the hour in the security and surveillance industry, this series has been integrated with the starlight technology along with efficient and powerful deep-learning algorithms to make your life hugely easier. The numerous AI-based smart functions of this camera let you capture a face, protect the perimeter and even count people, greatly improving the accuracy of your video analysis. This camera also complies with international certification standards such as IP67 and IK10, as this camera is not just dust-proof and water-proof but also shock-proof and vandal-proof (which is given in selected models).

### Functions

#### Starlight Technology

This camera is widely used to provide sharper and clearer picture quality with the help of its exceptional starlight sensitivity as the camera improves night vision in low light conditions. This technology is useful in conditions with extremely low light as the starlight technology turns almost completely dark images into those of clear colors.



# CP-UNC-VC41ZL4C-VMDS-V2

## 4MP WDR Network IR Vandal Dome Camera- 40 Mtr.

### Functions

#### True Day/Night (ICR)

When the scene is too dark, the image is captured by illuminating an infrared light through the camera onto the scene that greatly helps with making the scene visible for the lens. It delivers color images during the day and automatically switches to the monochrome feature as the scene darkens

#### Wide Dynamic Range (WDR)

When a scene is partly dark and partly bright, that is the dynamic range that distorts images due to this difference in the lighting. WDR technology provides you balanced lighting for a clear and vivid image throughout the day. WDR technology can be installed at entry/exit points of any building structure, jewelry shops, outdoor location among so many other places

#### Smart Motion Detection (SMD)

CPPLUS has introduced Smart Motion Detection, AI-based SMD, which use an advanced algorithm to differentiate human and vehicular shapes within a scene and send alarms only when a person or vehicle is detected.

#### Power over Ethernet (PoE)

This product uses the latest PoE technology to troubleshoot the occurrence of any issues in the system making it easier to use. With the help of this technology, your camera now only consumes energy directly from the power supply and doesn't require any mid-way switches

#### IK10 Technology

This product has been inculcated with the IK10 vandal resistance technology which is the topmost mechanical protection in the surveillance industry. This technology enables your camera in developing a strong and robust appearance that can't be defeated by water, dust or even severe shocks as the powerful housing of this camera deters any damage from occurring.

### About CP PLUS

The brand that is on its way to lead the world when it comes to the security and surveillance industry, CP PLUS, keeps bombarding the market with the most reliable range of products that have been designed carefully and methodically to automate the whole surveillance and security process, no matter how big your premises are.

It was the initiative to help the public in the area where they are the most vulnerable and to empower the sense of safety in our hearts that had conceptualized CP PLUS. And embarking on its mission to make the world a safer and more secure place has taken the brand's journey to unprecedented levels even when compared to international competitors.



# CP-UNC-VC41ZL4C-VMDS-V2

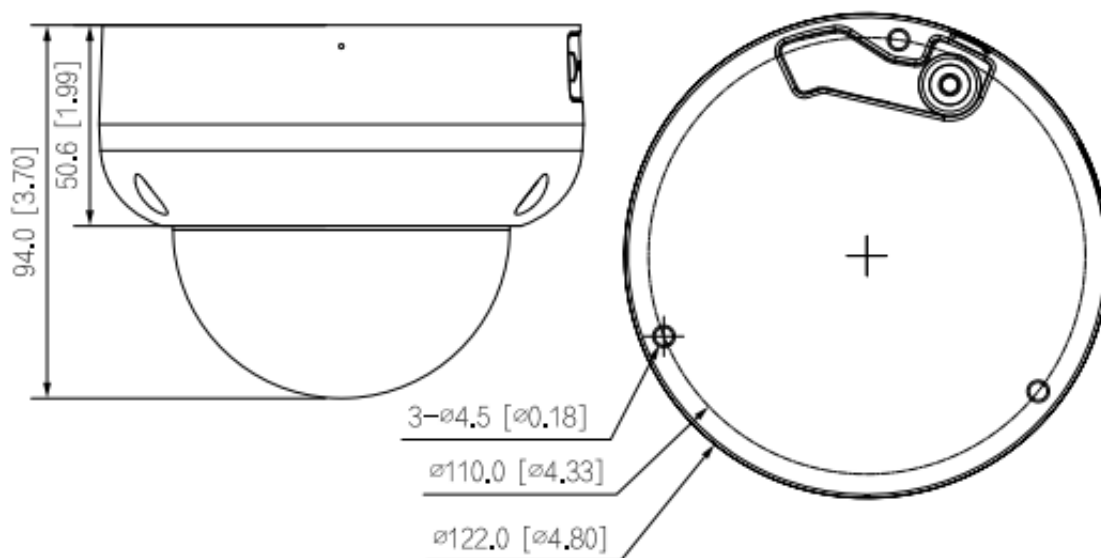
## 4MP WDR Network IR Vandal Dome Camera - 40 Mtr.

Feature	Specification
Image Sensor	1/3" 4 MP, PS CMOS Sensor(0.84667cm)
Effective Pixels	2688 (H) × 1520 (V)
RAM	512 MB
ROM	128 MB
S/N Ratio	More than 56dB
Mount Type	φ14
Lens	2.7 mm–13.5 mm
Max. Aperture	F1.5
Lens Type	Motorized
Iris Type	Fixed
Shutter Speed	Auto/Manual 1/3 s–1/100,000 s
Minimum Illumination	0.005 lux@F1.5 (Color, 30 IRE), 0.0005 lux@F1.5 (B/W, 30 IRE), 0 lux (IR on)
IR Control	Auto/Manual
IR Distance	IR Range of upto 40 Mtr.
IR Number	3 (IR LED)
Pan, Tilt, Rotation	Pan: 0°–355°; Tilt: 0°–80°, Rotation: 0°–355°
DORI Distance	W: 64.0m (Detect), 25.6m (Observe), 12.8m (Recognize), 6.4m (Identify) T: 210.0m (Detect), 84.0m (Observe), 42.0m (Recognize), 21.0m (Identify)
Angle of View	H:104°–29°, V:54° –16°, D:125° –33°
Close Focus Distance	0.8 m
Gain Control (AGC)	Auto
White Balance	Auto, natural, street lamp, outdoor, manual, regional custom
Back Light Compensation	BLC / HLC / WDR(120dB)
Video Compression	H.265, H.264, H.264H, H.264B, MJPEG (only supported by the sub stream)
Encode Strategy	Instastream, AI Instastream
Stream Capability	3 streams

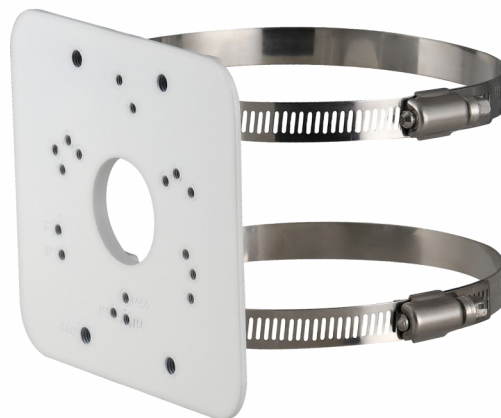
Feature	Specification
Resolution	4MP (2688 × 1520); 3.6MP (2560 × 1440); 3MP (2048 × 1536); 3MP (2304 × 1296); 1080P (1920 × 1080); 1.3M(1280 × 960); 720p (1280 × 720); D1 (704 × 576/704 × 480); CIF (352 × 288/352 × 240); VGA (640 × 480)
Frame Rate	Main stream: 2688 × 1520 @ (1–25/30) fps, Sub stream 1: 704 × 576 @ (1–25 fps)/704 × 480 @ (1–30 fps), Sub stream 2: 1920 × 1080 @ (1–25/30 fps) *The values above are the max. frame rates of each stream; for multiple streams, the values will be subjected to the total encoding capacity
Bit Rate Control	CBR/VBR
Bit Rate	H.264: 3 kbps–8192 kbps, H.265: 3 kbps–8192 kbps
Image Stabilization	Electronic Image Stabilization (EIS)
Smart Search	Work together with Smart NVR to perform refine intelligent search, event extraction and merging to event videos
Motion Detection	Off / On (4 Zone, Rectangle)
Privacy Mask	4 Area
AFSA	Yes
ICR	Auto (ICR)/Color/B/W
ROI	Yes (4 areas)
Audio Input	1 Ch. (RCA port)
Audio Output	1 Ch. (RCA port)
Built in Mic	Yes
Scene Self-adaptation (SSA)	Yes (AI SSA)
Perimeter Protection	Tripwire, intrusion (support the classification and accurate detection of vehicle and human)
Audio Compression	G.711a, G.711Mu, PCM, G.726, G.723
Alarm IN	1 channel In: 5 mA 3–5 VDC
Alarm Out	1 channel out: 300 mA 12 VDC
Alarm prompt	No SD card, SD card full, SD card error, service life warning (Only with CP Plus card), network disconnection, IP conflict, illegal access, motion detection, video tampering, intrusion, trip-wire, scene changing, audio detection, voltage detection, defocus detection, external alarm, SMD, safety exception
Quick Search	With AI NVR, quickly pick up the human/vehicle targets that users are interested in from SMD events

Feature	Specification
Cyber Security	Video encryption, Firmware encryption, Configuration encryption, Digest; WSSE, Account lock-out, Security logs, IP/MAC filtering, Generation and importing of X.509 certification, syslog, HTTPS, 802.1x, Trusted boot, Trusted execution, Trusted upgrade
Protocol	IPv4; IPv6; HTTP; TCP; UDP; ARP; RTP; RTSP; RTCP; RTMP; SMTP; FTP; SFTP; DHCP; DNS; DDNS; QoS; UPnP; NTP; Multicast; ICMP; IGMP; NFS; SAMBA; PPPoE; SNMP, CGI, ONVIF (Profile S, G, T), InstaOn, Milestone, Genetec
Ethernet	RJ-45 (10/100Base-T)
Mirror Function	Yes
SDK and API	Yes
Browser	IE11, Chrome, Firefox
Storage	Micro SD Card (256GB), FTP, SFTP, NAS
Image Rotation	0°/90°/180°/270° (support 90°/270° with 2688 × 1520 resolution and lower)
Defog	Yes
User/ Host	20 users (Total Bandwidth - 64M)
Smart Phone	iPhone, iPad, Android Phone
Storage Temperature	-40 °C to +60 °C (-40 °F to 140 °F)
Operating Temperature	-30° C ~ +60° C (-22° F ~ 140° F) / Less than 95% RH
Weatherproof Standard	IP67 & IK10
Power Source	12 VDC/PoE (802.3af)
Power Consumption	Basic: 2.8 W (12 VDC); 3.6 W (PoE) Max. (WDR + IR intensity + Intelligence): 7.9 W (12 VDC); 9.2 W (PoE)
Dimension	94 mm × Φ122 mm (3.7" × Φ4.8")
Casing	Metal
Weight	713 g

Dimensions (mm/inch)



Accessories : Optional



CP-UA-B2P  
Pole Mount

**Company Name:**

CP PLUS (Aditya Infotech Ltd.)  
F-28 Okhla Industrial Area, Phase 1,  
New Delhi 110020, INDIA

**Contact Mail ID :-** [customercare@cpplusworld.com](mailto:customercare@cpplusworld.com)