

# CP-UNC-TE4K081ZL5E-VMD

## 4K IR Network Bullet Camera - 50 Mtr.

- 1/2.5" 8MP PS CMOS Image Sensor (1.016 Cm)
- 15fps@4K(3840×2160),25/30fps@3Mp(2304×1296)
- Instastream, H.265 and H.264 Triple-stream encoding
- WDR, Day/Night (ICR), 3D-DNR, ROI, AWB, AGC, BLC, HLC
- 2.7mm ~12mm motorized lens
- IR Range of 50 Mtrs, IP67, IK10, ePoE, Micro SD Card
- Mobile Software: iCMOB, gCMOB
- CMS Software: KVMS Pro



### System Overview

The latest algorithmic advancements have boosted the Ultra Series' ability to support crowd detection, face detection, and vehicle detection among the others which also enables an accurate counting of people in the image as well as presents the heat map. The Ultra Series takes use of revved-up digital signal processors that enhance the image quality at all times of the day.

On top of that, Ultra Series Network Cameras have also been ingrained with hugely advantageous technologies such as IP67, IK10, and heater compliance to provide better protection to the solution if installed in unwavering conditions.



# CP-UNC-TE4K081ZL5E-VMD

## 4K IR Network Bullet Camera - 50 Mtr.

### Functions

#### Wide Dynamic Range (WDR)

When a scene is partly dark and partly bright, that is the dynamic range that distorts images due to this difference in the lighting. WDR technology provides you balanced lighting for a clear and vivid image throughout the day. WDR technology can be installed at entry/exit points of any building structure, jewelry shops, outdoor location among so many other place.

#### Smart Analytical Support

Using an advanced algorithm, smart analytical technology lets you set a multitude of safety parameters and sends you alerts when any of those parameters have been compromised. Not just when there's an occurrence of tripwire or intrusion.

**Face Detection** - With the help of the deep learning algorithm that is used in this technology, people can easily be detected, tracked, recorded, and captured. It takes only a second to detect one human face. Face detection is useful in cameras to help with auto-focus. This technology is mainly used to identify the presence of a human face.

#### True Day/Night

When the scene is too dark, the image is captured by illuminating an infrared light through the camera onto the scene that greatly helps with making the scene visible for the lens. It delivers color images during the day and automatically switches to the monochrome feature as the scene darkens.

#### Instastream

This camera has been designed with the latest and most efficient innovation among the standard video compression designs. Smart encoding algorithms developed by CP PLUS help in saving up to 70% more bandwidth than H.265 along with making it more beneficial for minimizing bandwidth and storage costs. It enhances video coding efficiency while providing high resolution and the rate of frame in the video using Intelligent Region Perception to detect motion in each frame.

### About CP PLUS

The brand that is on its way to lead the world when it comes to the security and surveillance industry, CP PLUS, keeps bombarding the market with the most reliable range of products that have been designed carefully and methodically to automate the whole surveillance and security process, no matter how big your premises are.

It was the initiative to help the public in the area where they are the most vulnerable and to empower the sense of safety in our hearts that had conceptualized CP PLUS. And embarking on its mission to make the world a safer and more secure place has taken the brand's journey to unprecedented levels even when compared to international competitors.



# CP-UNC-TE4K081ZL5E-VMD

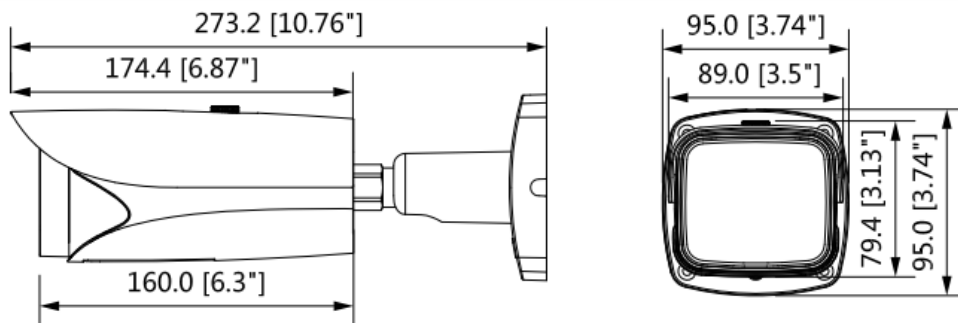
## 4K IR Network Bullet Camera - 50 Mtr.

Feature	Specification
Image Sensor	1/2.5" 8MP PS CMOS Image Sensor (1.016 Cm)
Effective Pixels	3840(H)x2160(V)
Minimum Illumination	0.05Lux/F1.4 (Color,1/3s,30IRE) 0.2Lux/F1.4 (Color,1/30s,30IRE) 0Lux/F1.4(IR on)
Shutter Speed	Auto/Manual, 1/3~1/100000s
ROM	32MB
RAM	512 MB
Max. Aperture	F1.4
Lens Mount	Board-in
Lens	2.7mm~12mm Motorized Lens
Iris Type	Auto
Gain Control (AGC)	Auto/Manual
Close Focus Distance	0.3 m
DORI Distance	W: 85m (Detect) 34m (Observe) 17m (Recognize) 8.5 m (Identify) T: 228m (Detect) 91m (Observe) 46m (Recognize) 23m (Identify)
White Balance	Auto/Natural/Street Lamp/Outdoor/Manual
Back Light Compensation	BLC / HLC / WDR
Stream Capability	3 Streams
Video Compression	H.265/H.264+/H.264
Encode Strategy	Instream
Pan, Tilt, Rotation	Pan:0°~360°; Tilt:0°~90°; Rotation:0°~360°
Angle of View	H:110°~40° , V:58°~23°
S/N Ratio	More than 50dB
Resolution	4K(3840×2160)/ 6M(3072×2048)/5M(3072x1728)/ 5M(2592×1944)/ 4M(2688×1520)/ 3M(2048x1536)/ 3M(2304×1296)/ 1080P(1920×1080)/1.3M(128 0x960)/ 720P(1280×720)/ D1 (704×576/704×480)/ VGA(640×480)/ CIF(352×288/352×240)

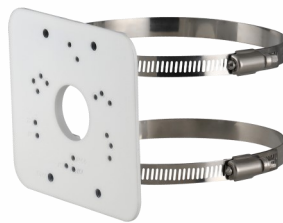
Feature	Specification
Frame Rate	Main Stream: 4K(1~15fps)/3M(1~25/30fps) Sub Stream 1: D1(1~25/30fps) Sub Stream 2: 720P(1~25/30fps)
Noise Reduction	3D DNR
Motion Detection	Off / On (4 Zone, Rectangle)
Privacy Mask	Off / On (4 Area, Rectangle)
ICR	Auto(ICR)/Color/B/W
ROI	Off / On (4 Zone)
Audio Compression	G.711a/ G.711Mu/ AAC/ G.726
Audio Input	1 Channel
Audio Output	1 Channel
Alarm IN	2 channel In: 5mA 5VDC
Alarm Out	1 channel Out: 300mA 12VDC
Bit Rate Control	CBR/VBR
Bit Rate	H.264: 24K ~ 10240Kbps H.265: 14K ~ 9984Kbps
Protocol	HTTP; HTTPS; TCP; ARP; RTSP; RTP; UDP; SMTP; FTP; DHCP; DNS; DDNS; PPPOE; IPv4/v6; QoS; UPnP;NTP; Bonjour; 802.1x; Multicast; ICMP; IGMP; SNMP; ONVIF, PSIA, CGI
Ethernet	RJ-45 (10/100Base-T)
IVS	Tripwire, Intrusion, Object Abandoned/Missing
Zoom	Digital Zoom: 16x; Optical Zoom: 4x
Mirror Function	Supported (Off / On)
IR	IR Range of 50 Mtr.
IR Control	Auto/ Manual
No. of IR LEDs	4 IR
Image Rotation	0°/90°/180°/270°
Micro SD	Mirco SD card 128GB
Storage	NAS Local PC for instant recording
Smart Phone	iPhone, iPad, Android
Browser	IE, Chrome, Firefox, Safari
User/Host	20 Users

Feature	Specification
Weatherproof Standard	IP67 & IK10
Operating Temperature	-30° C ~ +60° C, Less than 95% RH
Storage Temperature	-30° C ~ +60° C Less than 95% RH
Power Source	DC12V, ePoE
Power Consumption	<12.95W
Dimension	273.2mm x 95mm x 95mm
Casing	Metal
Weight	1.11 Kg

Dimensions (mm/inch)



Accessories : Optional



**CP-UA-B2P**  
**Pole Mount**

**Company Name:**

CP PLUS (Aditya Infotech Ltd.)

F-28 Okhla Industrial Area, Phase 1,

New Delhi 110020, INDIA

Contact Mail ID :- [customer@cpplusworld.com](mailto:customer@cpplusworld.com)