

ezyLiv+ Camera

Quick Installation Guide

EZ-P34Q

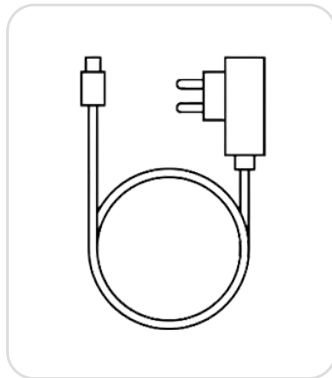
Thank you for choosing CP Plus ezyLiv+ camera.

Get Started using your new devices by downloading ezyLiv+ app, one convenient app that manages everything straight from your smart phone. Easily connect to your home Wi-Fi and control multiple devices from the touch of your fingertips

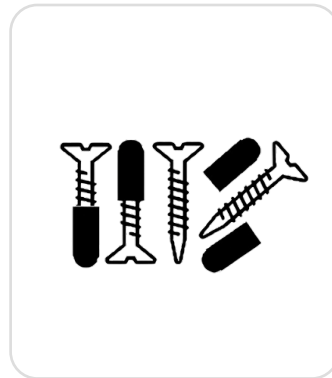
What's in the Box



ezyLiv+ Wi-Fi Camera



Power Adapter



Screw

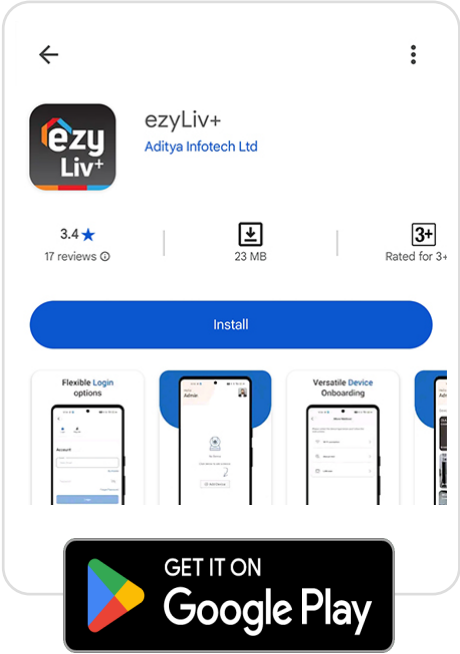


**Scan QR Code to
Download Quick
Installation Guide**

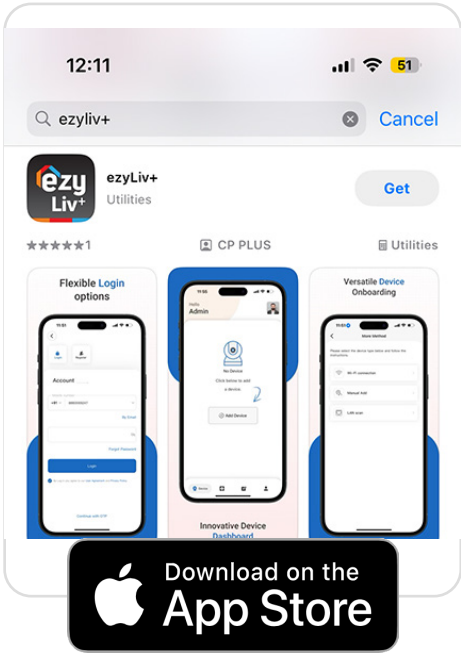
Get Ready

- Know your Wi-Fi network and password.
- Make sure your mobile device is running iOS 12.0 or higher or Android 10.0 or higher.
- Make sure you're connecting to a 2.4GHz Wi-Fi network (It can't connect to 5GHz networks).

1. Download the ezyLiv+ app from App Store or Google Play.




Google Play Store listing for ezyLiv+ app. The app is by Aditya Infotech Ltd, has a 3.4 star rating from 17 reviews, and is 23 MB. It is rated for ages 3+. The listing includes an 'Install' button and a 'GET IT ON Google Play' badge.



App Store listing for ezyLiv+ app. The app is by Aditya Infotech Ltd, has a 3.4 star rating from 17 reviews, and is 23 MB. It is rated for ages 3+. The listing includes a 'Get' button and a 'Download on the App Store' badge.

Scan QR Code to Download Mobile App



2. Register your account on ezyLiv+ application.

Login

Register

Create Account

India

Email

Enter Email

By Mobile

Continue

☒ Please note that by Logging in, you hereby agree to our [User Agreement](#) and [Privacy Policy](#)

or

Other Login

Guest Login

STEP 1

Select the country.
Enter the email address.

STEP 2

Enter the verification code
and create a password.

A mobile app interface for Step 2. At the top is a back arrow icon. Below it, the text "Enter OTP" is followed by a horizontal line. Underneath, it says "OTP has been sent to ****@gmail.com". There are six input boxes for the OTP code; the first box contains a vertical line. To the right of the boxes is a timer "117s". Below the boxes are two password input fields, each with a "show/hide" icon on the right. The first field is labeled "Enter your new password" and the second is labeled "Enter your confirm password". At the bottom is a blue button labeled "Confirm".

3. Plug in

How do I reset my camera?

Uncover the rubber protection on the bottom of camera. Locate SIM Slot with marking to insert the SIM card.

Optional:

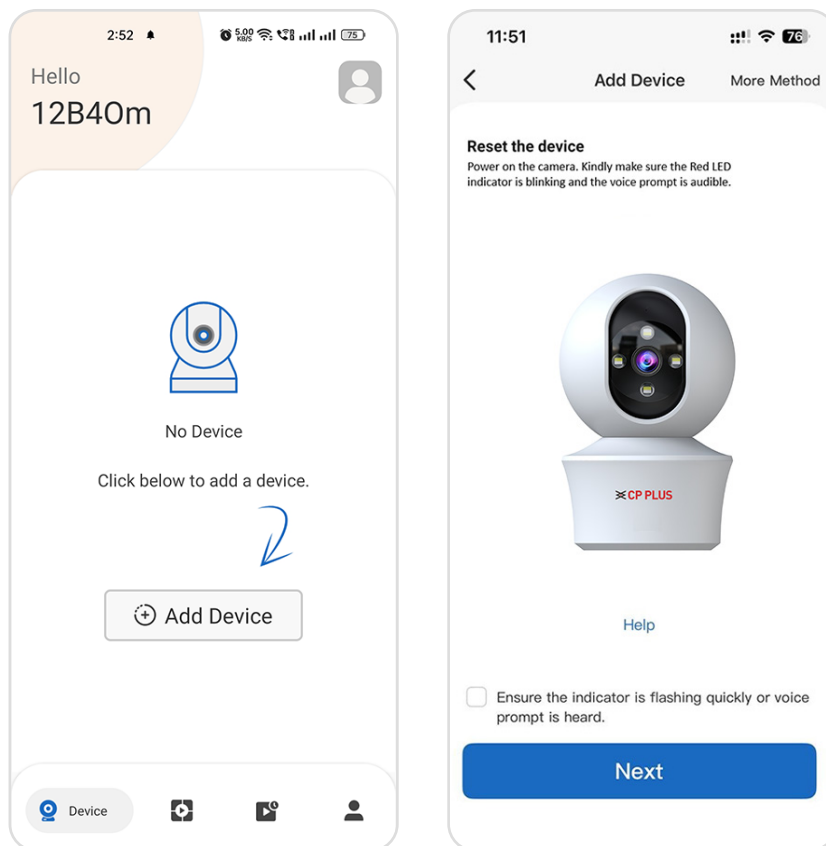
Insert Micro SD card.

Reset Button, Press the reset button for 15 seconds until you hear the beep.

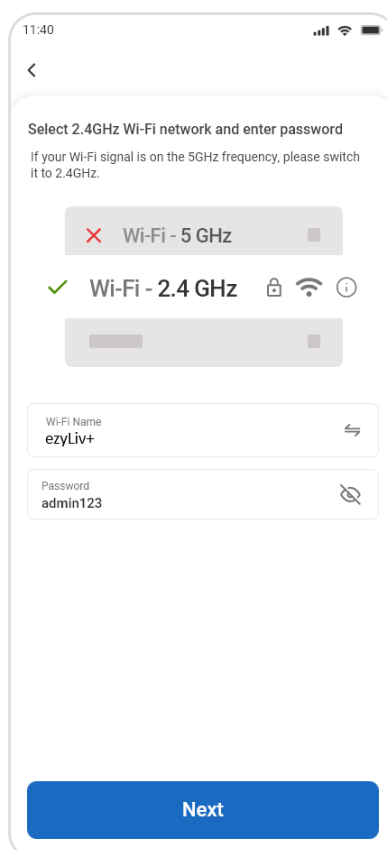


4. Add Camera

Open ezyLiv+ app, click “+” on the top right corner of the "Home" page, then select "Specific Device type to add"
Make sure the Red LED indicator is blinking, and the voice prompt is audible.



Enter your “Wi-Fi SSID and password”, and click



4.1 Add Camera

Read the instruction about "Scan QR code and click "Continue".

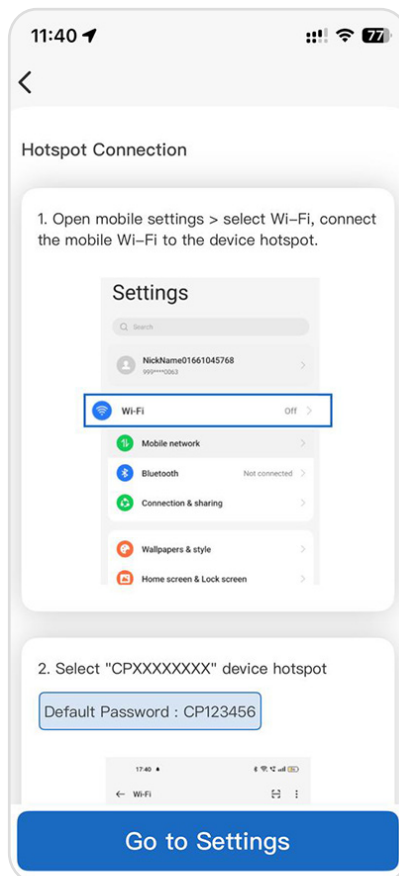
Open the mobile settings > select Wi-Fi, connect the mobile Wi-Fi to the device hotspot

Select "CPXXXXXXX" device hotspot, Default Password: CP123456

Keep your mobile Wi-Fi connected to device hotspot during the adding process

After connecting successfully, return to APP

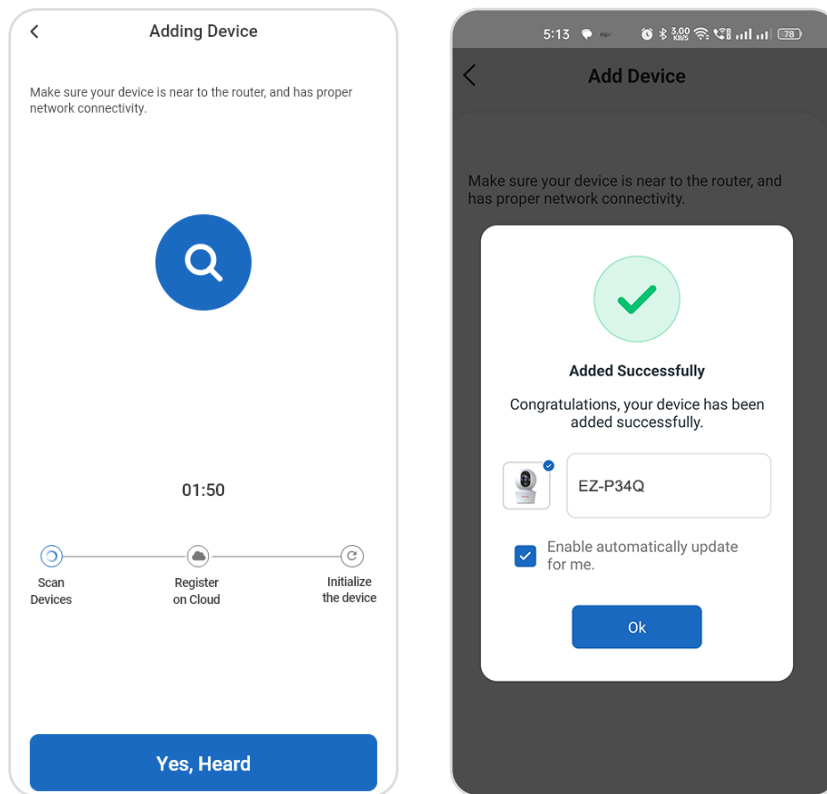
Scan the QR Code on your phone with camera. Heard a voice prompt, click I heard a prompt.



4.2 Add Camera

When the indicator light on the device turn to steady blue light, the network configuration is completed.

Please refer to the specific App interface if there are any difference.



Frequently Asked Questions

1. Can I share camera with family and friends?

Yes, you can share your camera with family and friends who will have access to view the camera.

2. What's the Wireless Range?

The range of your home Wi-Fi is heavily dependent on your home router and the conditions of the room. Check with your for exact range data.

3. The camera appears offline or unreachable.

If your camera appears offline or unreachable, first ensure it is properly connected to a power adapter. During the Wi-Fi setup, confirm that your Wi-Fi network is active and functioning correctly. If the Wi-Fi signal is weak or unstable, try resetting your Wi-Fi router and reconnecting the camera to the network. These steps will help resolve most connectivity issues.

4. Cannot connect to your Wi-Fi network.

To resolve the issue of not being able to connect your camera to the Wi-Fi network, ensure that the camera is within the router's range and that you enter the correct Wi-Fi password during the setup process. Double-check that both the Wi-Fi name (SSID) and password are entered accurately to avoid any connection failures. Properly following these steps will help establish a successful connection between the camera and your Wi-Fi network.

5. How many cameras can I control?

The CP Plus app can technically manage up to 200 cameras, providing extensive control and monitoring capabilities for large setups. However, it also depends on your network's capacity, particularly your router's limit. Each router has a specific bandwidth and device connection limit.

Voice control work with Google Assistant



Technical Specifications

- **Resolution:**
EZ-P34Q= 2304x1296@15fps, H.265 encoding
- **Field of view:**
EZ-P34Q= 86.2° (H), 46.1° (V), 102.6° (D)
- **Audio:** Internal Speaker and Microphone.
- **Storage:** supports up to 256GB Micro SD card (not included, please refer to the respective data sheet.)
- **Wi-Fi:** IEEE 802.11b/g/n, 2.4GHz (not compatible with 5GHz Wi-Fi networks)



The Future of Smart Living

For further assistance, you can reach us via

support@ezyliv.com

****Please read the instruction carefully before using the product****

