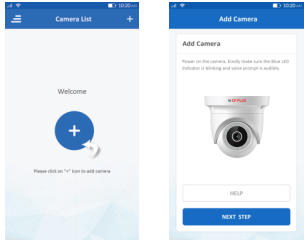


#### 4. Add Camera

- Open **ezykam+** app, click "+" on the top right corner of the "HOME" page, then select "Specific model to add".
- Make sure that the Red LED indicator is blinking and voice prompt is audible.

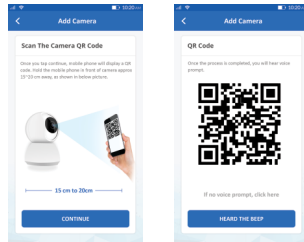


- Enter your "Wi-Fi network and password", click "CONFIRM".



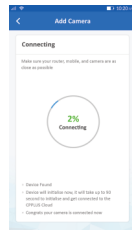
#### 4.0 Add Camera

- Read the instruction about "Scan the camera QR code" and click "Continue".
- Scan the QR Code on your phone with camera. Heard a voice prompt, click "Heard the beep"



#### 4.1 Add Camera

- When the indicator light on the device turn to steady blue light, the network configuration is complete.
- Please refer to the specific APP interface if there are any difference.



### Frequently Asked Questions

- Can I share camera with family and friends?**  
Yes, you can share your cameras with family and friends who will have access to view the camera.
- What's the Wireless Range?**  
The range of your home Wi-Fi is heavily dependent on your home router and the conditions of the room. Check with your router specifications for exact range data.
- The camera appears offline or unreachable?**  
Make sure you entered the correct Wi-Fi password during the Wi-Fi setup. Check whether there is any Internet connection problem. If the Wi-Fi signal is too weak, reset your Wi-Fi router and try again.
- Cannot connect to your Wi-Fi network.**  
Make sure you entered the correct Wi-Fi password during the Wi-Fi setup. Check whether there are any Internet connection problems. If the Wi-Fi signal is too weak, reset your Wi-Fi router and try again.
- How many cameras can I control?**  
CP Plus app can control unlimited number of cameras in unlimited amount of locations. Your router may have a limit of how many cameras can be connected to one router.

### Works with Alexa and Google Assistant

- Now Stream your camera video using Alexa and Google Assistant.



### System Requirements

- Smartphone running iOS® 9.0 or higher or Android™ 8.0 or higher
- Existing Wi-Fi Network with internet connection

### Technical Specifications

- Camera: up to 3MP (2304x1296) at 20frames / sec. H.265 encoding
- Viewing Angle: 104°
- Audio: Internal Speaker and Microphone
- Storage: supports up to 128GB Micro SD card (not included)
- Wi-Fi: IEEE 802.11b/g/n, 2.4GHz (not compatible with 5GHz Wi-Fi networks)

## ezyKam+

### Quick Operation Guide

#### D32A

Thank you for choosing CP PLUS ezykam+. Get started using your new devices by downloading ezykam+ app, one convenient app that manages everything straight from your smart phone. Easily connect to your home Wi-Fi and control multiple devices from the touch of your fingertips

### What's in the Box



ezykam Wi-Fi Camera



Power Adapter

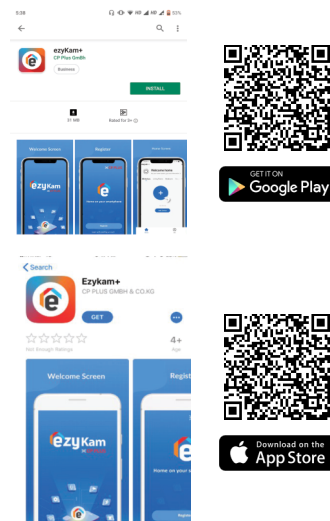


Quick Operation Guide

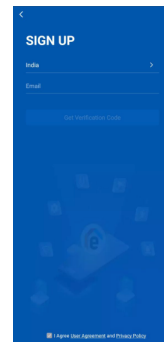
### Get Ready

- Know your Wi-Fi network and password.
- Make sure your mobile device is running iOS® 9.0 or higher or Android™ 8 or higher .
- Make sure you're connecting to a 2.4GHz Wi-Fi network (It can't connect to 5GHz networks)

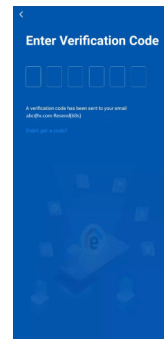
#### 1. Download the ezykam+ app from App Store or Google Play.



#### 2. Register an account on your ezykam+ app.



- STEP 1.
- Select the country.
  - Enter the email address.

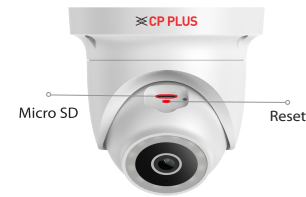


- STEP 2.
- Enter the verification code and create a password

#### 3. Plug in

##### How do I reset my camera?

- Use the reset pin to press the Reset Button for several seconds until the camera starts to beep.
- **Optional:** Insert Micro SD card



Thank you for choosing CPPlus ezykam+

For further assistance, you can reach us via [ezycare@cpplusworld.com](mailto:ezycare@cpplusworld.com)

**\*\* Please read the instruction carefully before using the product \*\***