

CP-UNC-TE21ZL20E-VMD

2MP Full HD WDR IR Bullet Camera - 200Mtr.

- 1/2.8" 2MP PS CMOS Image Sensor (0.9071 centimeters)
- Max. 50/60fps@1080(1920×1080)
- Support Starlight Function
- Instastream and H.264+ triple-stream encoding
- WDR(120dB), Day/Night (ICR), 3D-DNR, ROI, AWB, AGC, BLC, HLC
- 5.3~64mm Motorized lens
- IR Range of 200 Mtrs, IP67, IK10, Micro SD Card, PoE
- Mobile Software: iCMOB, gCMOB
- CMS Software: KVMS Pro



System Overview

Using the advanced algorithms of the twenty-first century the Pro Series by CP Plus has been boosted with the starlight technology which is widely used for getting sharper and clearer images with the help of the unprecedented starlight sensitivity that improves night vision for the camera in low-light conditions. On top of that, the Pro Series also consists of the highly efficient H.265 compression technology.

Functions

Starlight Technology

This camera is widely used to provide sharper and clearer picture quality with the help of its exceptional starlight sensitivity as the camera improves night vision in low light conditions. This technology is useful in conditions with extremely low light as the starlight technology turns almost completely dark images into those of clear colors.



CP-UNC-TE21ZL20E-VMD

2MP Full HD WDR IR Bullet Camera - 200Mtr.

Functions

Wide Dynamic Range (WDR)

When a scene is partly dark and partly bright, that is the dynamic range that distorts images due to this difference in the lighting. WDR technology provides you balanced lighting for a clear and vivid image throughout the day. WDR technology can be installed at entry/exit points of any building structure, jewellery shops, outdoor location among so many other places.

Live Viewing

Unlike some, this technology enables you to record the picture feed but view it live as well at your convenience. On top of that, the advantages of high-resolution video recording are numerous.

Smart Analytical Support

Using an advanced algorithm, smart analytical technology lets you set a multitude of safety parameters and sends you alerts when any of those parameters have been compromised. Not just when there's an occurrence of tripwire or intrusion, but also in the cases of missing or abandoned objects.

True Day/Night (ICR)

When the scene is too dark, the image is captured by illuminating an infrared light through the camera onto the scene that greatly helps with making the scene visible for the lens. It delivers color images during the day and automatically switches to the monochrome feature as the scene darkens.

Regions of interest

Regions of Interest (ROI) is a user defined feature that allows the operator to monitor specific areas of a scene while still maintaining overall situational awareness of less important areas.

gCMOB/ iCMOB

Designed to allow users to access and control live streaming from CP PLUS IP Cameras, DVRs/ NVRs and Video Door Phones, the CP PLUS gCMOB/ iCMOB application offers a host of features such as Easy GUI, up to 16 live viewing split-ups; InstaOn cloud support; Playback; digital zoom ins; two-way talk, and more.

About CP PLUS

The brand that is on its way to lead the world when it comes to the security and surveillance industry, CP PLUS, keeps bombarding the market with the most reliable range of products that have been designed carefully and methodically to automate the whole surveillance and security process, no matter how big your premises are.

It was the initiative to help the public in the area where they are the most vulnerable and to empower the sense of safety in our hearts that had conceptualized CP PLUS. And embarking on its mission to make the world a safer and more secure place has taken the brand's journey to unprecedented levels even when compared to international competitors.



CP-UNC-TE21ZL20E-VMD

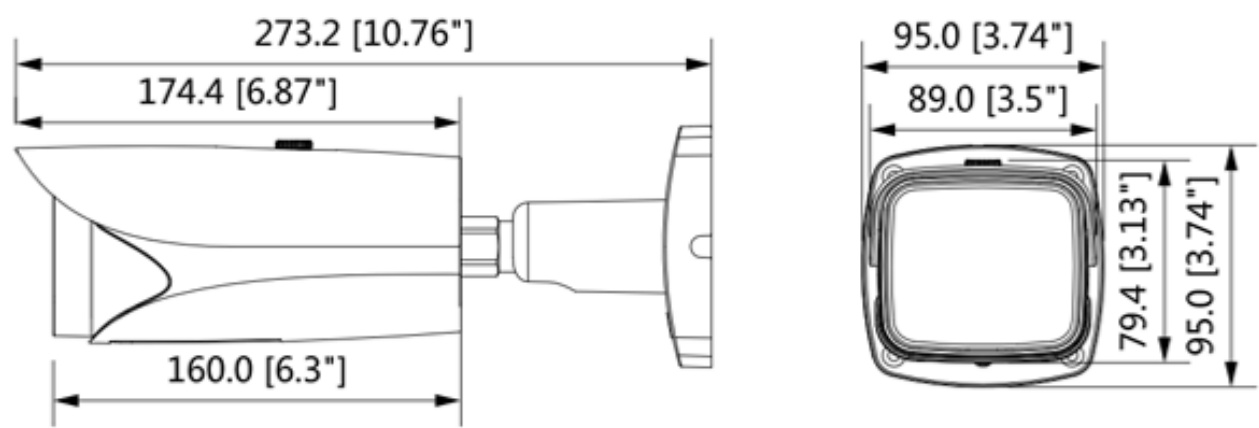
2MP Full HD WDR IR Bullet Camera - 200Mtr.

Feature	Specification
Image Sensor	1/2.8" 2Megapixel progressive scan CMOS (0.9071 centimeters)
Effective Pixels	1920(H) x 1080(V)
Minimum Illumination	0.006Lux/F1.4 (Color,1/3s,30IRE) 0.05Lux/F1.4 (Color,1/30s,30IRE) 0Lux/F1.4 (IR on) B/W: 0.1 lux (at 30 IRE)
Shutter Speed	Auto/Manual 1/3(4) s–1/100000s
White Balance	Auto/Natural/Street Lamp/Outdoor/Manual
S/N Ratio	More than 50dB
RAM/ROM	256MB/32MB
Lens	5.3mm~64mm
Lens Type	Motorized
Iris	Auto Iris (HALL), DC Iris
ROI	Off / On (4 Zone)
Mount Type	Board-in
Max. Aperture	F1.4
Close Focus Distance	1.5m
DORI Distance	W– 73m (Detect) 29m (Observe) 14m (Recognize) 7m (Identify) T– 882m (Detect) 353m (Observe) 176m (Recognize) 88m (Identify)
Gain Control (AGC)	Auto/Manual
Noise Reduction	3D-DNR
Angle of View	H: 59°~5°, V:34°~3°
Video Compression	Instastream/H.265/H.264+/H.264/MJPEG
Back Light Compensation	BLC / HLC / WDR(120dB)
Video Streaming	Main Stream: 1080P(1~50/60fps) ; Sub Stream: D1(1~50/60fps) Third Stream: 1080P(1~25/30fps)
Resolution	1080P(1920x1080)/1.3MP(1280x960)/ 720P(1280x720)/D1(704x576/704x480)/ VGA(640x480)/CIF(352x288/352x240)
Motion detection	Off / On (4 Zone, Rectangle)

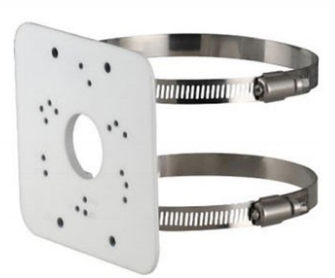
Feature	Specification
Privacy Mask	Off / On (4 Area, Rectangle)
ICR	Auto (ICR) / Color / B/W
Audio Input	1 (RCA port)
Audio Output	1 (RCA port)
Audio Compression	G.711A/G.711Mu/G.726/AAC
Mirror	Off/on
Alarm IN	2 channel In: 5mA 5VDC
Alarm Out	1 channel Out: 300mA 12VDC
Video Bit Rate	H.264: 24~9472Kbps ; H.265: 14~5632Kbps
Bit Rate	CBR/VBR
Smart Detection	Intrusion; tripwire, Object Abandoned/Missing, Face Detection
OTA (Online Device Upgrade)	Support
Cloud Health Monitoring System (HMS)	Support
User Account	20 Users
Protocol	HTTP; HTTPS; TCP; ARP; RTSP; RTP; RTCP; UDP; SMTP; FTP; DHCP; DNS; DDNS; PPPOE; IPv4/v6; QoS; UPnP; NTP; Bonjour; 802.1x; Multicast; ICMP; IGMP; SNMP; ONVIF, PSIA, CGI
Ethernet	RJ-45 (10/100Base-T)
IR	IR Range of 200 Mtr., Smart IR
Smart Phone	iPhone, iPad, Android Phone
Micro SD	Micro SD card 128GB
Operating Temperature	-30°C~+60°C , Less than 95%RH
Power Source	12V DC/PoE (802.3af)
Power Consumption	<12.95W
Browser	IE, Chrome, Firefox, Safari
Weatherproof Standard	IP67, IK10

Feature	Specification
Casing	Metal
Dimension	273.2mm×95.0mm×95.0mm (10.76"×3.74"×3.74")
Weight	1.11Kg

Dimensions (mm/inch)



Accessories: Optional



CP-UA-B2P
Pole Mount