



 **ezyKam+**

Smart Home
Wi-Fi Cloud
Security Camera

E51AR - 5MP AI Camera

NOW





720P
Standard Security Camera



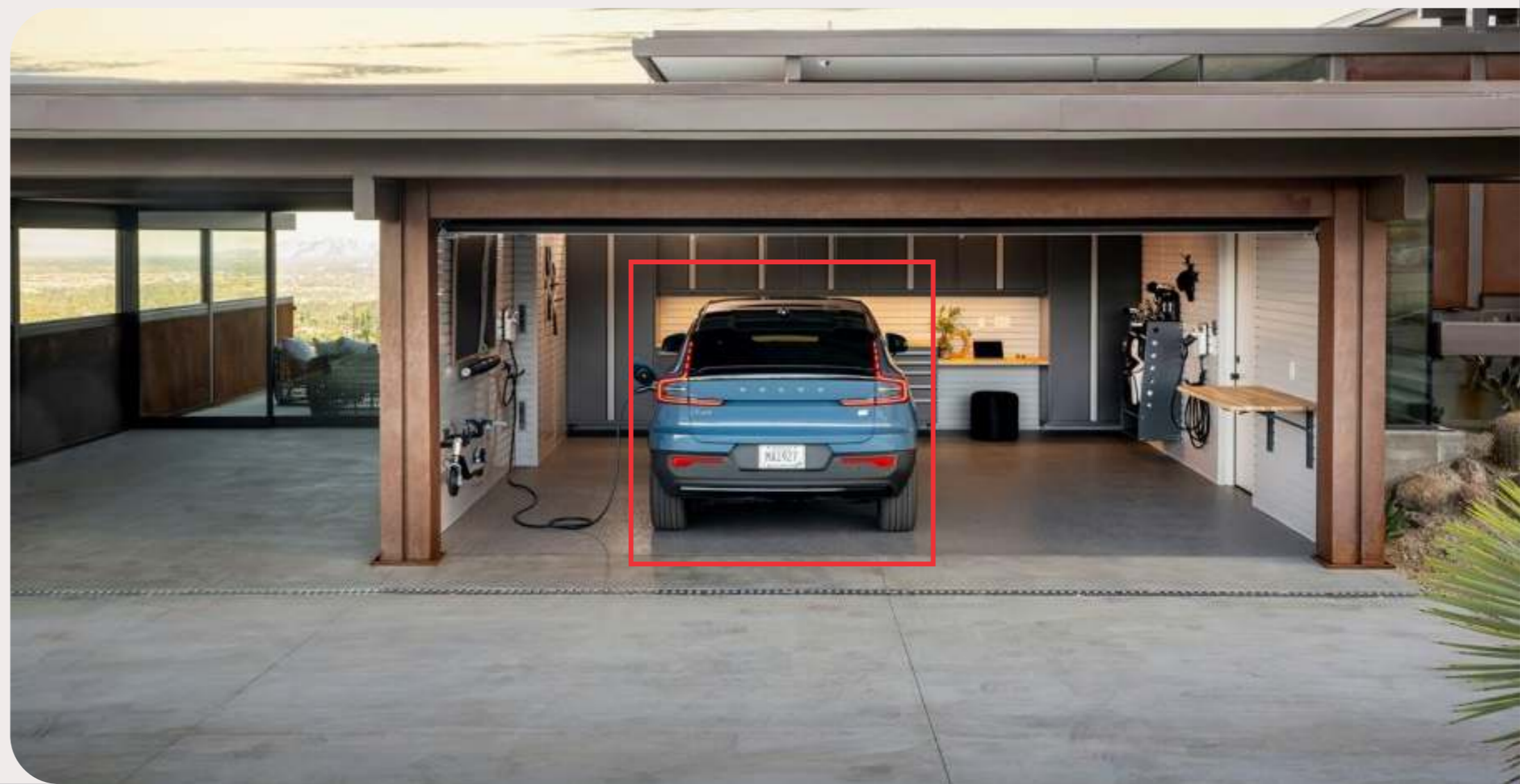
5MP AI Camera
Using the CP Plus Ezykam+ Camera 360

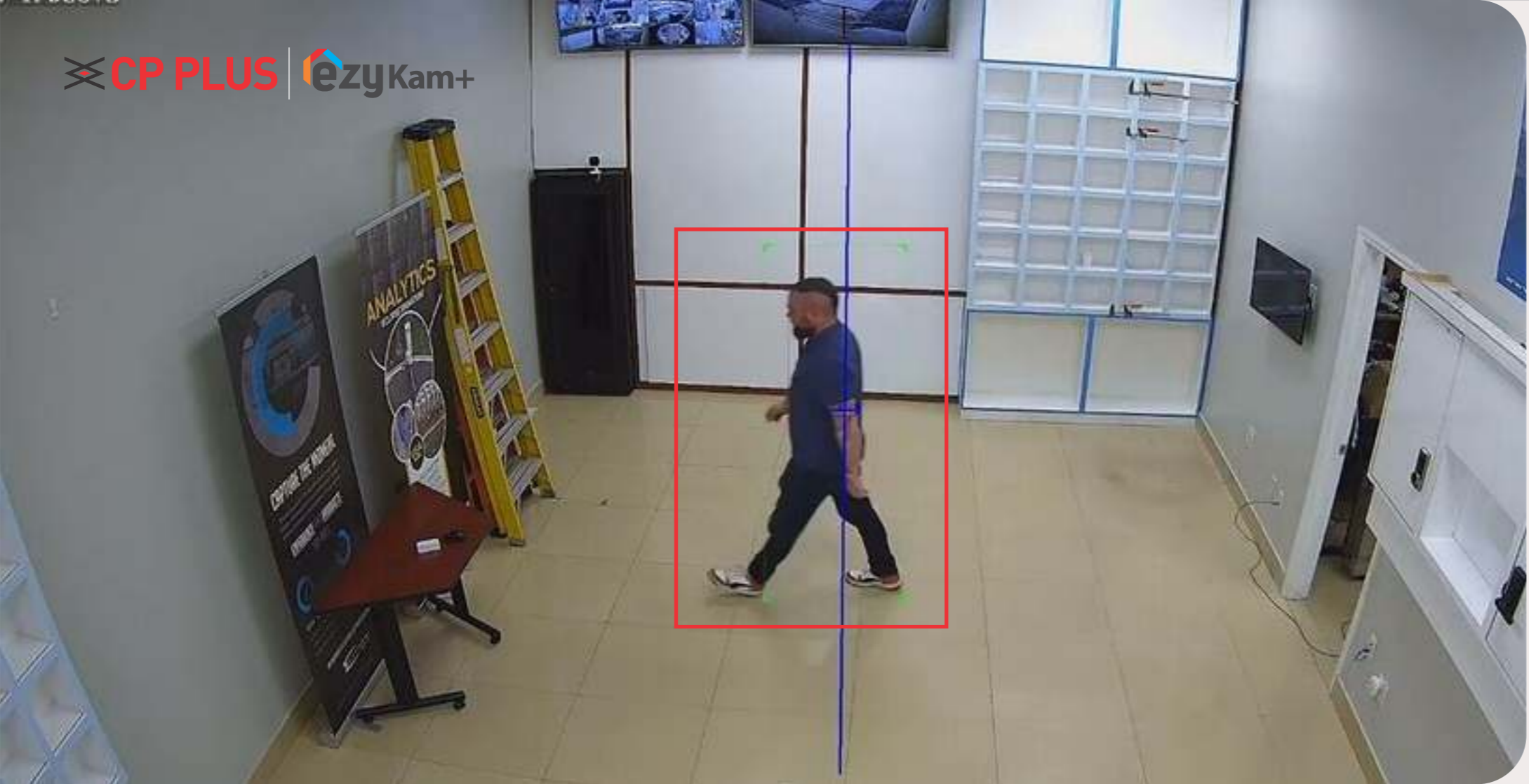
5MP AI Camera

Providing intelligent AI analytics such as Vehicle Detection & Crossline Detection, this camera delivers greater resolution for enhanced picture quality, enabling complete round-the-clock protection through vivid video and added artificial intelligence tools.

Vehicle Detection

Offering precise vehicle detection to ensure real-time monitoring and maintain complete security in housing complexes and large offices for enhanced protection against intruders.





Crossline Detection

With advanced crossline detection, this camera intelligently identifies boundary breaches, providing instant notifications and reinforcing perimeter security for comprehensive surveillance solutions.

In-built Siren

This camera has been developed with an in-built siren to deter intruders. The in-built siren goes off as soon as unexpected motion is detected in the video frame to ensure complete security.



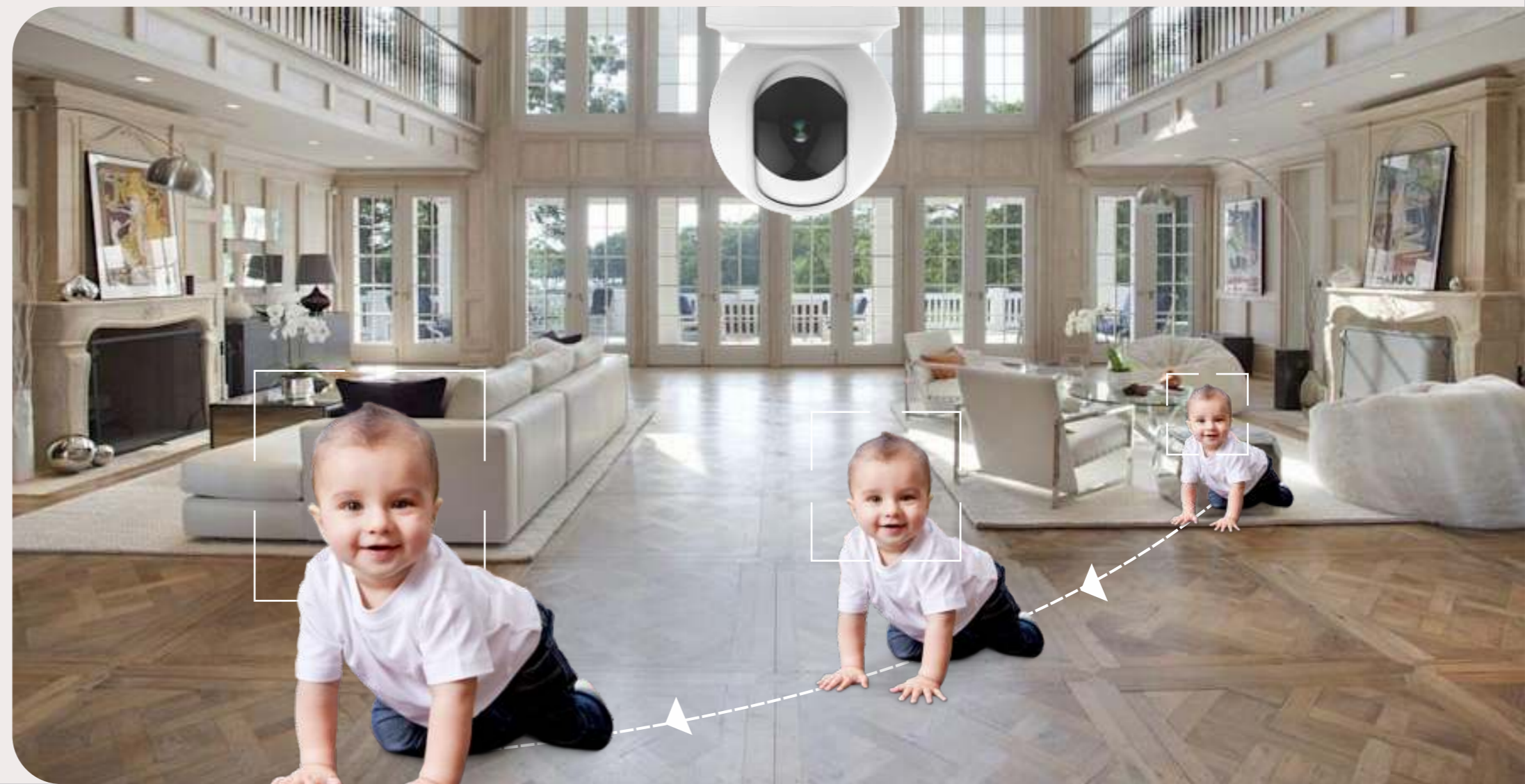


Human body Detection

Designed to provide human detection and intelligent alerts, which means only being alerted only when the need occurs as the camera detects people as opposed to animals, passing vehicles, or other inanimate moving objects.

Supports Motion Tracking

Whenever unexpected motion is detected in the video frame, the camera has been devised to rotate automatically to track the movement of people and record it to investigate later.





View & Talk

Enables you to stay in touch with your loved ones from anywhere, meaning you can also talk while viewing the live video feed on the phone.

Alexa and Google Supported

The CP PLUS EzyKam+ also works with both Alexa & Google Home, which lets you integrate your surveillance solution with your smart home system, meaning that with a simple voice command, you can now view your camera feed live on TV or smart phone.



"Alexa, show me kid's room camera."

"showing the kid's room view."



Specification - E51AR

Feature	Specification
Image Sensor	5MP CMOS sensor
Compression	H.265
Resolution	2880 (H) x 1620 (V)
Lens	4mm
S/N Ratio	58dB
IR cut filter	IR cut filter with auto switch
Aperture	F1.6
Sensitivity	-36dB± 2dB
Pan/Tilt Range	Pan: 355°, Tilt: 71°
Motion Detection	Support
Motion Tracking	Support
Audio Communication	Two Way Audio
Audio Input	Built-in Mic
Audio Output	Speaker
Angle of View	"H : 91.3°, V : 49°, D : 108.7"

Feature	Specification
AI Features	Human shape detection, Vehicle detection, Zoom, Edge alert , Wi-Fi 6
Wireless	IEEE 802.11 b/g/n
Frequency	2.4GHz
Work with Alexa	Support
Work with Google Home	Support
IR distance	IR LEDs up to 20 meters
SD Card	Max up to 256GB (SD Card not included)
Smart Phone	IOS & Android
Working Temperature	-10° C - 50° C
Working Humidity	<95% non-condensing
Power Supply	DC 5V 1A
Presets	6
Dimension	77mm x 77mm x 107mm
Weight	210.4g

Applications



Kids Safety



Office



Home



Retail Shops



Pet Safety