

CP-UNC-DA21ZPL4-M-V3

2MP Full HD Network Dome Camera - 40Mtr.

- 1/2.8" 2MP PS CMOS Image sensor(0.9071Cm)
- Max. Outputs 2MP(1920 × 1080)@25/30 fps
- Instastream, Smart H.264, H.264, H.265, H.264B encoding
- DWDR, Day/Night(ICR), 3D-NR, ROI, AWB, AGC, BLC, HLC
- 2.8mm~12mm Motorized Lens
- IR Range of 40 Mtrs, IP67, Micro SD Card, PoE
- Mobile Software: iCMOB, gCMOB
- CMS Software: KVMS Pro



System Overview

With features of simple installation, easy operation, and high performance-cost ratio, This Series camera is applicable to small and medium-sized scenes, such as homes/residences, small-sized retail stores, and other small and medium-sized enterprises.

Functions

True Day/Night (ICR)

When the scene is too dark, the image is captured by illuminating an infrared light through the camera onto the scene that greatly helps with making the scene visible for the lens. It delivers color images during the day and automatically switches to the monochrome feature as the scene darkens.



CP-UNC-DA21ZPL4-M-V3

2MP Full HD Network Dome Camera - 40Mtr.

Functions

Regions of Interest

Regions of Interest (ROI) is a user defined feature that allows the operator to monitor specific areas of a scene while still maintaining overall situational awareness of less important areas.

Power over Ethernet (PoE)

This product uses the latest PoE technology to troubleshoot the occurrence of any issues in the system making it easier to use. With the help of this technology, your camera now only consumes energy directly from the power supply and doesn't require any mid-way switches.

KVMS Pro

The KVMS Pro is a hybrid security management software that allows the management of various surveillance devices such as cameras, DVRs/ NVRs, encoders/ decoders, etc. It is released with the surveillance hardware and exclusively supports CP PLUS device.

gCMOB/ iCMOB

Designed to allow users to access and control live streaming from CP PLUS IP Cameras, DVRs/ NVRs and Video Door Phones, the CP PLUS gCMOB/ iCMOB application offers a host of features such as Easy GUI, up to 16 live viewing split-ups; InstaOn cloud support; Playback; digital zoom ins; two-way talk, and more.

About CP PLUS

The brand that is on its way to lead the world when it comes to the security and surveillance industry, CP PLUS, keeps bombarding the market with the most reliable range of products that have been designed carefully and methodically to automate the whole surveillance and security process, no matter how big your premises are.

It was the initiative to help the public in the area where they are the most vulnerable and to empower the sense of safety in our hearts that had conceptualized CP PLUS. And embarking on its mission to make the world a safer and more secure place has taken the brand's journey to unprecedented levels even when compared to international competitors.



CP-UNC-DA21ZPL4-M-V3

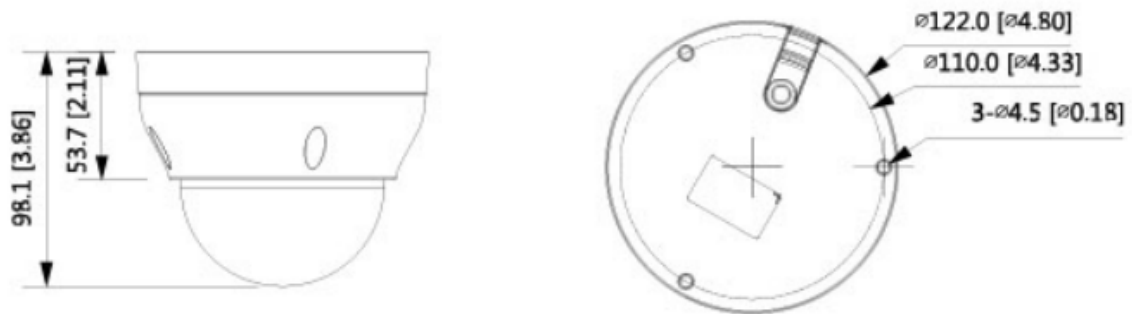
2MP Full HD Network Dome Camera - 40Mtr.

Feature	Specification
Image Sensor	1/2.8" 2Megapixel progressive CMOS(0.9071Cm)
Effective Pixels	1920 (H) × 1080 (V)
Minimum Illumination	0.005 Lux @ F1.5
Shutter Speed	Auto/Manual, 1/3~1/100000s
RAM	128 MB
ROM	16 MB
Max. Aperture	F1.5
Lens	2.8mm~12mm Motorized lens
Lens Mount	φ14
Iris Type	Fixed
Gain Control (AGC)	Auto/Manual
Close Focus Distance	1.2m (3.9 ft)
DORI Distance	W: 48 m(Detect) 19 m(Observe) 19 m(Recognise) 5m (Identify) T: 131m(Detect) 52m(Observe) 26m(Recognise) 13m (Identify)
White Balance	Auto/natural/street lamp/outdoor/manual/regional custom
Back Light Compensation	BLC / HLC / DWDR
Video Compression	H.265; Smart H.264+; H.264; H.264B; MJPEG (Only supported by the sub stream)
Encode Strategy	Instream
Pan, Tilt, Rotation	Pan: 0°-355°; Tilt: 0°-75°; Rotation: 0°-355°
Angle of View	Horizontal: 101°-33.5°; Vertical: 52.5°-19°; Diagonal: 125°-38.5°
S/N Ratio	> 56 dB
Resolution	1080p (1920 × 1080); 1.3M (1280 × 960); 720p (1280 × 720); D1 (704 × 576/704 × 480); VGA
Frame Rate	Main Stream: 1920 × 1080 (1 fps-25/30 fps) Sub stream: 704 × 576 (1 fps-25 fps) 704 × 480 (1 fps-30 fps)
Stream Capability	2 streams

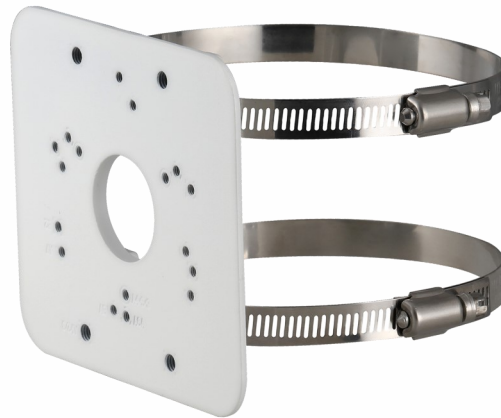
Feature	Specification
Noise Reduction	3D NR
Motion detection	OFF/ON (4 areas, rectangular)
Image Rotation	0°/90°/180°/270° (Support 90°/270° with 1080p resolution and lower)
Abnormality detection	No SD card, SD card full, SD card error, network disconnection, IP conflict, illegal access, Motion detection, video tampering, security exception
Privacy Mask	4 areas
ICR	Auto(ICR)/Color/B/W
ROI	Supported (4 areas)
SDK and API	Supported
Bit Rate Control	CBR/VBR
Bit Rate	H.264: 32 Kbps–6144 Kbps H.265: 12 Kbps–7424 Kbps
Protocol	IPv4; IPv6; HTTP; TCP; UDP; ARP; RTP; RTSP; SMTP; FTP; DHCP; DNS; NTP; Multicast; DDNS; ONVIF (Profile S/Profile T); CGI; InstaOn Cloud; Genetec
Ethernet	RJ-45 (10/100Base-T)
Alarm Event	No SD card; SD card full; SD card error; Network disconnection; IP conflict; illegal access; motion detection; video tampering; defocus detection; safety exception
Cyber Security	Video encryption; configuration encryption; Digest; WSSE; account lockout; security logs; generation and importing of X.509 certification; HTTPS; trusted boot; trusted execution; trusted upgrade
IR Distance	40 M
IR Control	Auto; Manual
IR Number	2 (IR Led)
Storage	FTP
Micro SD	Micro SD card (support max. 256 GB)
Mirror Function	Supported
User/Host	6 Users (Total B/W- 24M)
Smart Phone	iPhone, iPad, Android Phone
Browser	IE; Chrome; Firefox
Operating Temperature	–30 °C to +60 °C (–22 °F to 140 °F)
Storage Temperature	–40°C to +60°C (–40°F to +140°F)
Humidity	≤95%

Feature	Specification
Weatherproof Standard	IP67
Power Source	DC12V, PoE (802.3af)
Power Consumption	Basic power consumption: 1.5W (12V DC); 2.3W (PoE) Max. power consumption (ICR + H.265 + IR intensity): 4.3W (12V DC); 5.5W (PoE)
Casing	Plastic
Dimension	98.1 mm × Φ122 mm (3.9" × Φ4.8")
Weight	0.38 kg

Dimensions (mm/inch)



Accessories : Optional



**CP-UA-B2P
Pole Mount**

Company Name:

CP PLUS (Aditya Infotech Ltd.)
F-28 Okhla Industrial Area, Phase 1,
New Delhi 110020, INDIA

Contact Mail ID :- customer@cpplusworld.com